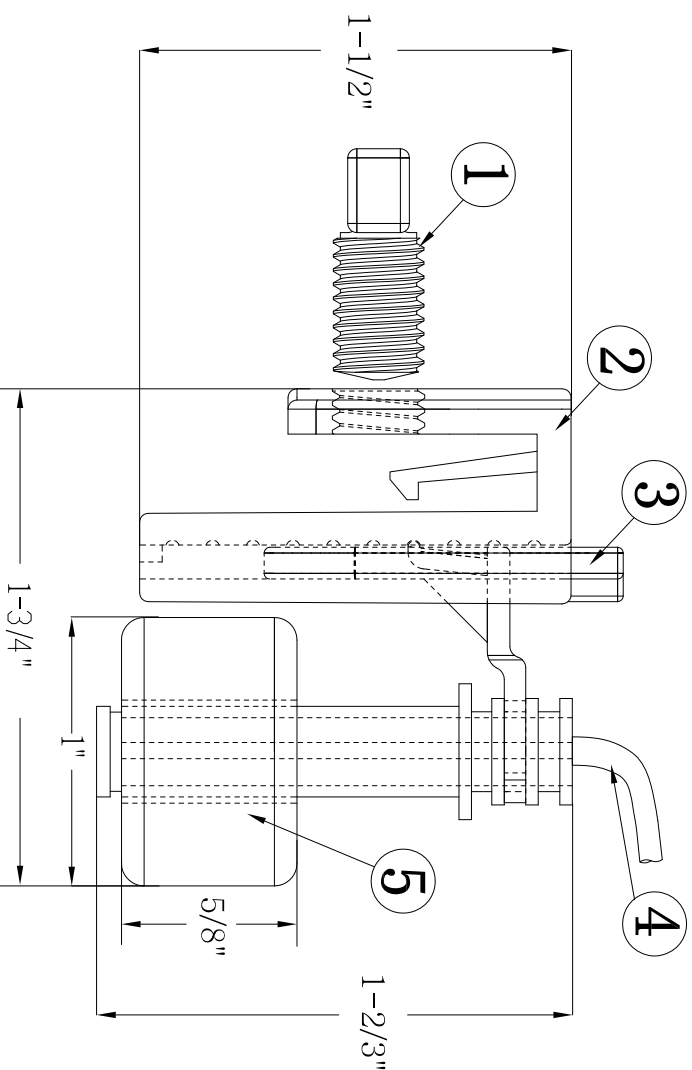


ALL-ACCESS® Model AA4P



LISTED
IND. CONT. EQ.
E474895
US PATENT NO:
9,423,148



- ① PA6 Fixed Knob
- ② PA6 Clip/Bracket
- ③ PA6 Moveable Holder
- ④ CL3P

- ⑤ Electrically Potted Switch/Cap Assembly

- ⑥ 72"-Inch, 18AWG Plenum Cables (Pre-wired and Potted)

COMMENTS/REQUIREMENTS:

- Potted electrically water sealed reed/magnet switch design
- Tested to UL 508 and UL 2043
- Minimum Pan Depth:1-1/2" Inch, Adjusts for deeper pans
- Sensitivity: 1/4"-inch rise in float opens switch
- 24 Volts A/C Class 2
- 1.25 Amp switching capacity.

MSD RESEARCH

www.ALL Access Device.com

PART NAME:

MODEL AA4P A/C CONDENSATE® PAN OVERFLOW SWITCH

TOLERANCES: <small>(EXCEPT WHERE NOTED)</small>		SCALE:	DRAWN BY:	DATE:
XX ± .020	NONE	NONE	Lisa	2/25/18
.XXX ± .005	DRAWING:	APPROVED BY:	REVISION:	
.XXXX ± .0005	AA4P		C	
ANG ± 1/2 °				