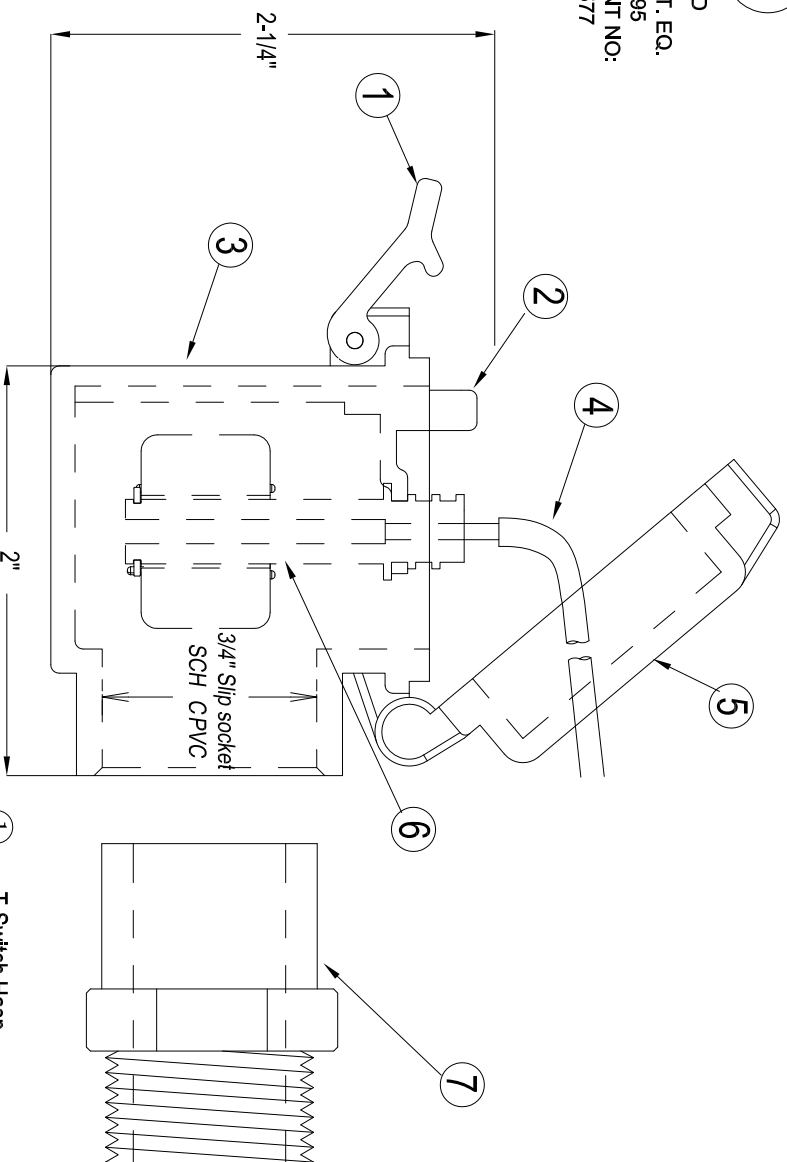


# ALL-ACCESS® Model 1 AA2P



LISTED  
IND. CONT. EQ.  
E474895  
US PATENT NO:  
9,217,577



- ① T-Switch Hasp
- ② PA6 Moveable Holder
- ③ CPVC Plastic Body
- ④ CL3P
- ⑤ CPVC Top Lid
- ⑥ Electrically Potted Switch/Cap Assembly
- ⑦ 3/4" NPT X 3/4" SLIP CPVC Adaptor
- ⑧ 72"-Inch, 18AWG Plenum Cables (Pre-wired and Potted)

## COMMENTS/REQUIREMENTS:

- Potted, electrically water sealed
- CPVC Plastic Components
- reed/magnet switch design.
- 24 VAC.
- Tested to UL 508 and UL 2043
- 1.25 Amp switching capacity.

## MSD RESEARCH

www.ALL Access Device.com

PART NAME:  
CONDENSATE® DRAIN PAN OVERFLOW KIT  
AA2P

TOLERANCES: <small>(EXCEPT WHERE NOTED)</small>	SCALE:	DRAWN BY:	DATE:
XX ± .020	NONE	Lisa	2/25/18
.XXX ± .005	DRAWING:	APPROVED BY:	REVISION:
.XXXX ± .0005	AA2P		B
ANG ± 1/2 °			